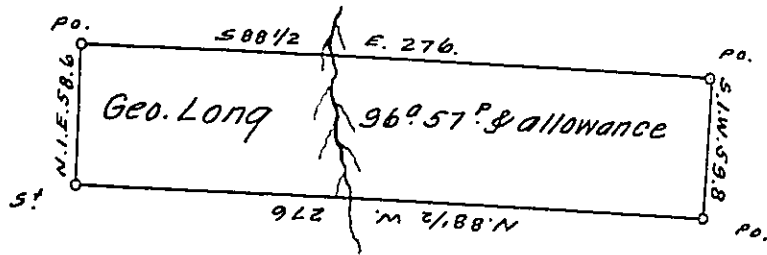


Jane Morgan

John Detark



John Crane

John Blatt & Shatt.

Draught of a tract of land situate in Richland Township Clarion County. Containing ninety six acres and fifty seven perches & allowance at six per cent ^{surveyed} on the 7th day of July 1844. in pursuance of ^a ~~warrant~~ warrant. ~~by~~ dated 4 May 1844 granted to George Long.

John H. Groce. D.S.

The above is a Copy of John H. Groce's record of Survey.

J. H. Maxwell D.S.

Hon. John Laporte
Surveyor General.

IN TESTIMONY that the above is a copy of the original remaining on file in the Department of Internal Affairs of Pennsylvania, made conformably to an Act of Assembly approved the 16th day of February, 1833, I have hereunto set my Hand and caused the Seal of said Department to be affixed at Harrisburg, this seventeenth day of April 1912.

Nancy Howell
Secretary of Internal Affairs.